



Solid 山西索立得工贸有限公司

Shanxi Solid Industrial Co.,Ltd.

SOLID VALVES

Shanxi Solid Industrial Co.,Ltd.

ADD: 28F, No.8 Changxing South Street, Jinyuan District ,
Taiyuan , Shanxi, China

Postcode: 030021

Tel1: 0086-351-8390369

Tel2: 0086-351-8390336

Fax : 0086-351-8390339

Email 1: info@cnsolid.com

Email 2: sales@cnsolid.com

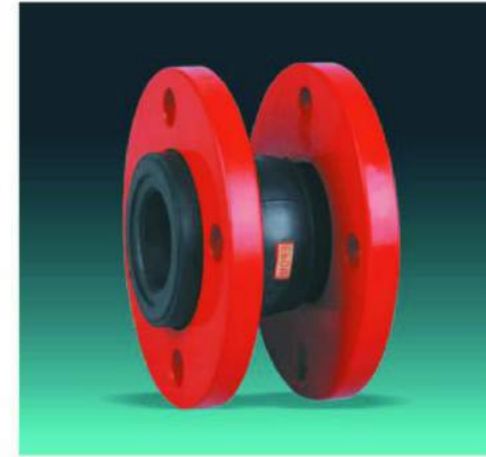
Website : <http://www.solidvalves.com>





Cast iron & Ductile iron valves
Gate Valves

Expansion Joint



Art No.: SOLID077

Type: Single sphere
Class: 125PSI,PN6,PN10,PN16,PN25
Size: DN25-DN600

Expansion Joint



Art No.: SOLID078

Type: Double sphere
Class: 125PSI,PN6,PN10,PN16,PN25
Size: DN25-DN600

Expansion Joint

Art No.: SOLID079

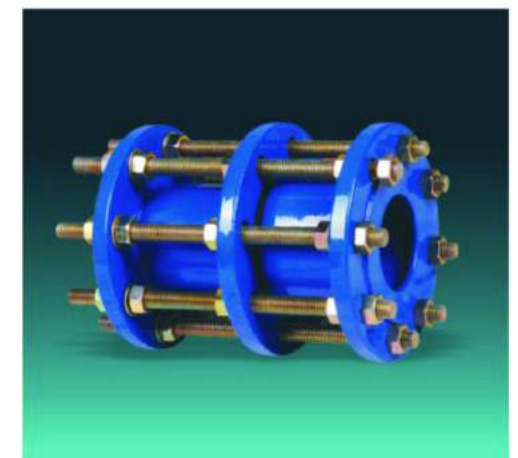
Type: Twin union sphere
Class: 125PSI,PN6,PN10,PN16,PN25
Size: 3/4"(DN20)-6"(DN150)



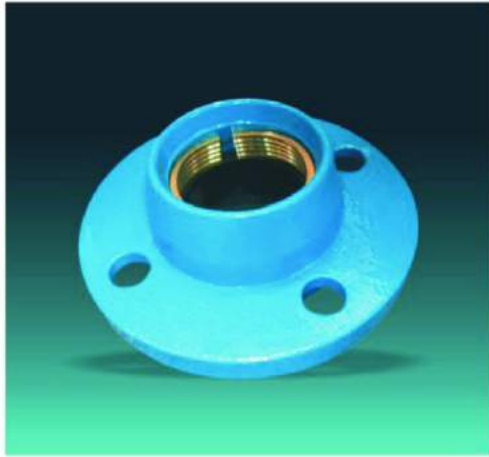
Dismantling joint

Art No.: SOLID080

Type: Use for pipe:AC,PVC,PE,DI,steel pipe
Class: PN6,PN10,PN16,PN25
Size: DN40-DN1200



Flange Adaptor



Art No.: SOLID073

Type: Use for PE pipe
Class: PN10,PN16
Size: DN40–DN300

Coupling



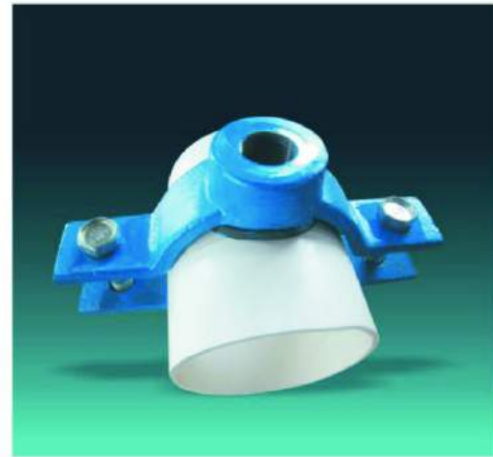
Art No.: SOLID074

Type: Use for PIPE:AC,PVC,PE,DI,STEEL pipe
Class: PN10,PN16,PN25
Size: DN40–DN1200

Saddle

Art No.: SOLID075

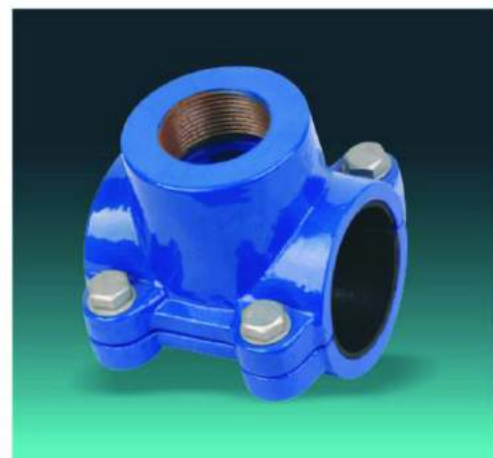
Class: 125PSI,PN6 ,PN10,PN16,PN25
Use for pipe: AC, Ductile iron,Steel pipe
Size: DN50–DN300



Saddle

Art No.: SOLID076

Type: Use for pipe: AC,PVC,PE,DI,steel pipe
Class: PN6,PN10,PN16,PN25
Size: DN50–DN315



Resilient Seated Gate Valves



Art No.: SOLID001

Design: AWWA C509/AWWA C515
Type: NRS.Flange end, with pad for actuator
Face to face: ANSI B16,10
Class: 125PSI,250PSI
Size: 11/2"–32"

Resilient Seated Gate Valves



Art No.: SOLID002

Design: AWWA C509/AWWA C515
Type: NRS,Mechanical joint end
ANSI/AWWA C111/A21,11
Size: 11/2"–24"

Resilient Seated Gate Valves

Art No.: SOLID003

Design: AWWA C509/AWWA C515
Type: NRS,Groove end
Class: 125PSI,250PSI
Size: 11/2"–8"



Resilient Seated Gate Valves

Art No.: SOLID004

Design: AWWA C509/AWWA C515
Type: NRS,push-on end
Class: 125PSI 250PSI
Size: 11/2"–12"



Resilient Seated Gate Valves



Art No.: SOLID005

Design: AWWA C509/AWWA C515

Type: OS&Y, Flange end

Size: 1 1/2"-24"

Resilient Seated Gate Valves



Art No.: SOLID006

Design: BS5163 Type A EN1171 EN1074 EN558-1

Type: NRS, Flange end

Face to face: EN558-1 Series3

Class: PN6, PN10, PN16

Size: DN50-DN2200

Resilient Seated Gate Valves

Art No.: SOLID007

Design: BS5163 T type A EN1074 EN558-1

Type: NRS, Flange end

Class: PN25

EN558-1 series 4

Size: DN50-DN300



Resilient Seated Gate Valves

Art No.: SOLID008

Design: BS5163 Type B EN1074

Type: NRS, Flange end

Class: PN16

Face to face: EN558-1 series 3

Size: DN50-DN2200



Fire Hydrant



Art No.: SOLID069

Design: BS750

Size: DN80-DN150

Signal Indicator valve



Art No.: SOLID070

Design: AWWA C509/C515

Type: Flange end, with the indicator

Size: DN50-DN300

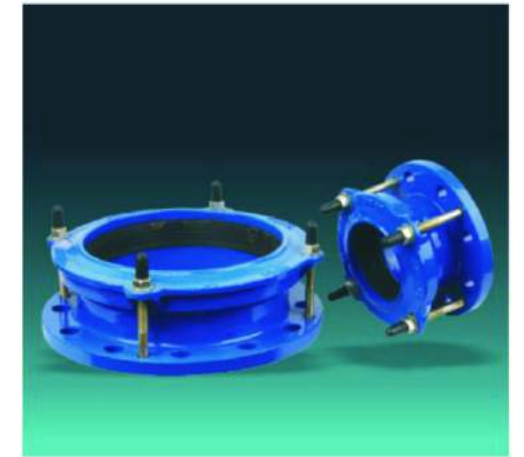
Flange Adaptor

Art No.: SOLID071

Type: Use for PIPE:AC,PVC,PE,DI,STEEL pipe

Class: PN10,PN16

Size: DN40-DN1200



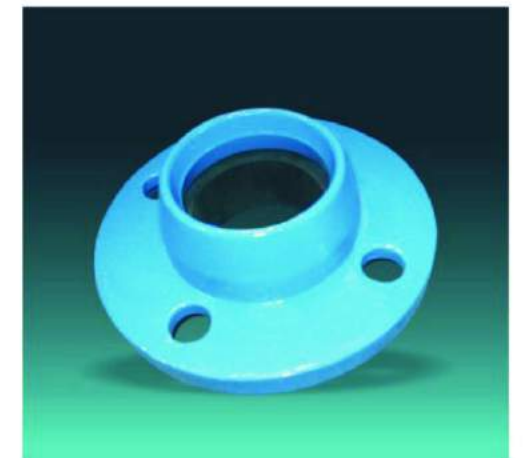
Flange Adaptor

Art No.: SOLID072

Type: Use for PVC pipe

Class: PN10, PN16

Size: DN40-DN300



Service valves



Art No.: SOLID065

Design: EN1074-5

Type: Angle pattern,thread end

Size: 1/2"-2"

Service valves



Art No.: SOLID066

Design: EN1074-5

Type: Straight pattern,thread end

Size: 1/2"-2"

Flap Valves

Art No.: SOLID067

Design: EN1074-5

Type: Flange end

Size: 2"(DN50)-12"(DN300)



Fire Hydrant

Art No.: SOLID068

Design: BS750

Class: PN10,PN16

Size: DN65-DN80



Resilient Seated Gate Valves



Art No.: SOLID009

Design: BS5163 Type A EN1171 EN 1074 EN558-1

Type: OS&Y,Flange end

Class: PN6,PN10,PN16

Face to face: EN558-1 series 3

Size: DN40-DN2200

Resilient Seated Gate Valves



Art No.: SOLID010

Design: DIN3352-F4 EN1171 EN558-1

Type: NRS,Flange end

Class: PN6,PN10,PN16,PN25

Face to face: EN558-1 series 14

Size: DN40-DN2200

Resilient Seated Gate Valves

Art No.: SOLID011

Design: DIN3352-F4 EN1171 EN558-1

Type: NRS,Flange end,For gear box operated

Class: PN6,PN10,PN16,PN25

Size: DN450-DN800



Resilient Seated Gate Valves

Art No.: SOLID012

Design: DIN3352-F5 EN1171 EN558-1

Type: NRS,Flange end

Class: PN6,PN10,PN16,PN25

Face to face: EN558-1 series 15

Size: DN40-DN2200



Resilient Seated Gate Valves



Art No.: SOLID013

Design: DIN3352 F4/F5 EN1171 EN558-1
 Type: OS&Y, Flange end
 Class: PN6, PN10, PN16
 Size: DN40-DN2200

Resilient Seated Gate Valves



Art No.: SOLID014

Design: BS5163, Type A DIN3352 F4/F5 EN1171
 Type: NRS, Flange end
 Class: PN10, PN16
 Size: DN50-DN200

Resilient Seated Gate Valves

Art No.: SOLID015

Design: SABS 664/665
 Type: NRS, Flange end
 Class: PN10, PN16
 Size: DN40-DN600



Resilient Seated Gate Valves

Art No.: SOLID016

Design: KSB 2334 (Korean standard)
 Type: NRS, Flange end
 Class: 5K, 10K, 16K
 Face to face: KSB 2334
 Size: DN50-DN400



Air Valves



Art No.: SOLID061

Design: EN1074-4
 Type: Flange end,
 Single Orifice Superposition Automatic type
 Size: DN50-DN100

Air Valves



Art No.: SOLID062

Design: EN1074-4
 Type: Thread end, Single Orifice Automatic type
 Size: 1/2"-2"

Air Valves

Art No.: SOLID063

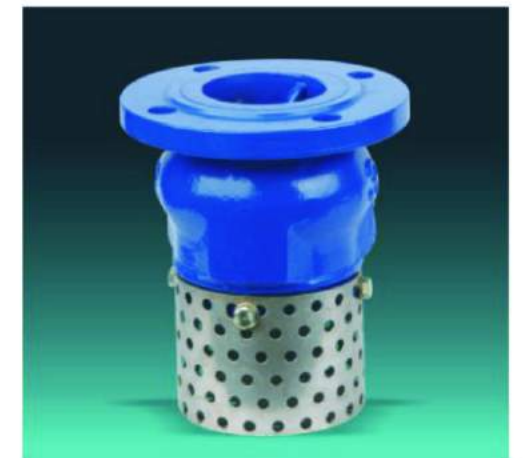
Design: EN1074-4
 Type: Thread End, single Orifice Automatic type
 Size: 1/2"-2"



Foot Valves

Art No.: SOLID064

Design: EN1074-5
 Type: Flange end
 Size: 2"(DN50)-12"(DN300)



Air Valves



Art No.: SOLID057

Design: EN1074-4

Type: Flange end with inner isolation valve

Size: DN50-DN200

Air Valves



Art No.: SOLID058

Design: EN1074-4

Type: Flange end, Double Orifice Automatic type

Size: DN50-DN200

Air Valves

Art No.: SOLID059

Design: EN1074-4

Type: Flange End, Single Orifice Combined-type

Size: DN50-DN200



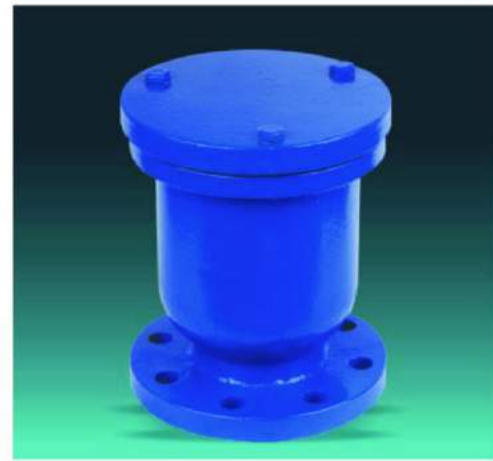
Air Valves

Art No.: SOLID060

Design: EN1074-4

Type: Flange end, Single Orifice Automatic type

Size: DN50-DN150



Resilient Seated Gate Valves



Art No.: SOLID017

Design: TAIWAN STANDARD

Type: NRS, Flange end

Class: 7.5K, 10K

Size: DN50-DN600

Resilient Seated Gate Valves



Art No.: SOLID018

Design: EN1171 EN558-1 SABS669

Type: NRS socket end For PVC

Class: PN10, PN16

Size: DN50-DN315

Resilient Seated Gate Valves

Art No.: SOLID019

Design: EN1171 EN558-1 ISO2531

Type: NRS, socket end For DUCTILE IRON PIPE

Class: PN10, PN16

Size: DN50-DN300



Resilient Seated Gate Valves

Art No.: SOLID020

Design: EN1171 EN558-1 ISO2531

Type: NRS, spigot end

Class: PN10, PN16

Spigot end: For PVC, PE, Ductile iron pipe

Size: DN50-DN315



Metallic Seated Gate Valves



Art No.: SOLID021

Design: MSS SP-70/AWWA C500

Type: NRS, OS&Y, Flange end

Class: 125PSI, 150PSI

Size: 1 1/2"-24"

Metallic Seated Gate Valves



Art No.: SOLID022

Design: BS5163 Type A BS5150 EN1171 EN558-1

Type: NRS, Flange end

Class: PN6, PN10, PN16

Face to face: EN558-1 series 3

Size: DN40-DN2200

Metallic Seated Gate Valves

Art No.: SOLID023

Design: BS5163 Type B EN1074 EN558-1

Type: NRS, Flange end

Class: PN6, PN10, PN16

Size: DN50-DN300



Metallic Seated Gate Valves

Art No.: SOLID024

Design: BS3464

Type: NRS, Flange end

Size: DN40-DN300



Strainer



Art No.: SOLID053

Design: EN1074

Type: Y type, Thread end

Size: 1/2"(DN15)-6"(DN150)

Strainer



Art No.: SOLID054

Design: DIN3202F1, EN1074, BS2080

Type: Y type, Flange end, heavy duty

Size: 1/2"(DN15)-24"(DN600)

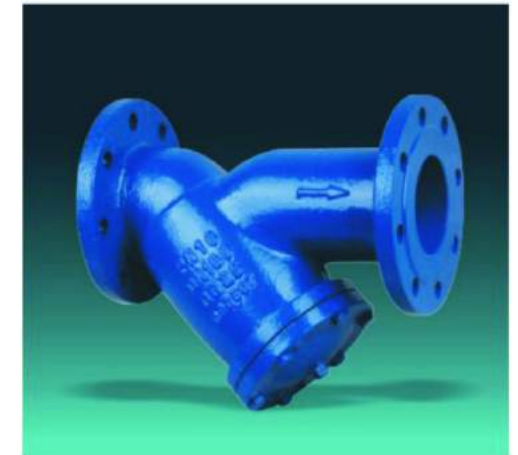
Strainer

Art No.: SOLID055

Design: EN1074, MSS-SP

Type: Y type, Flange end, light duty

Size: 1/2"(DN15)-12"(DN300)



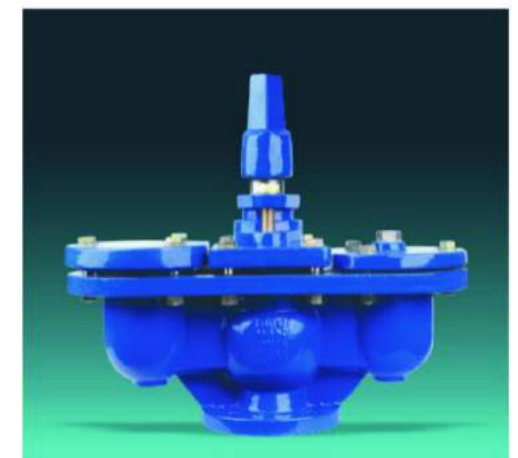
Air Valves

Art No.: SOLID056

Design: EN1074-4

Type: Flange end with inner isolation valve

Size: DN50-DN200





Cast iron & Ductile iron valves
Other Valves & Accessories

Metallic Seated Gate Valves



Art No.: SOLID025

Design: DIN3352 F4 EN1171 EN558-1
Type: NRS, Flange end
Class: PN6, PN10, PN16
Size: DN40-DN2200

Metallic Seated Gate Valves



Art No.: SOLID026

Design: DIN3352 F4/F5 EN1171 EN558-1
Type: OS&Y, Flange end
Class: PN6, PN10, PN16
Size: DN40-DN2200

Metallic Seated Gate Valves

Art No.: SOLID027

Design: DIN3352 F5 EN1171 EN558-1
Type: NRS, Flange end
Class: PN6, PN10, PN16
Size: DN40-DN400



Metallic Seated Gate Valves

Art No.: SOLID028

Design: SABS664/SABS665
Type: NRS, Flange end
Class: PN10, PN16
Size: DN40-DN600





Cast iron & Ductile iron valves
Check Valves

Ball Valves



Art No.: SOLID049

Design: API 6D
Type: Full bore, Flange end
Face to Face: ANSI B16.10
Size: 1/2"-12"

Ball Valves



Art No.: SOLID050

Design: DIN3357
Type: Full bore, Flange end
Face to Face: EN558-1 series 14/15
Size: DN15-DN300

Ball Valves

Art No.: SOLID051

Design: DIN3357
Type: Reduce bore, Flange end
Size: DN15-DN300



Ball Valves

Art No.: SOLID052

Design: JIS 7S-48
Type: Full bore, Flange end
Size: DN15-DN300





Cast iron & Ductile iron valves
Ball Valves

Check Valves



Art No.: SOLID029

Design: AWWA C508, MSS SP-71, BS5153, DIN3202 F6, EN1074-3
Type: Flexible swing type, Flange end
Class: 125PSI, 150PSI, PN6, PN10, PN16
Size: 11/2"(DN40)-24"(DN600)

Check Valves



Art No.: SOLID030

Design: AWWA C508, MSS SP-71, EN1074-3
Type: Dual Plated type, **wafer** end
Class: 125PSI, 150PSI, PN6, PN10, PN16
Face to face: EN558-1 series 16
Size: 11/2"(DN40)-48"(DN1200)

Check Valves

Art No.: SOLID031

Design: BS5153, DIN3202 F6, EN1074-3
Type: Ball type, Flange end
Class: PN6, PN10, PN16
Size: DN40-DN400



Check Valves

Art No.: SOLID032

Design: EN1074-3
Type: Ball type, thread end
Size: 1/2"(DN15)-4"(DN100)



Check Valves



Art No.: SOLID033

Design: AWWA C508, MSS SP-71, BS5153
Type: Swing type, Flange end with weight lever
Class: 125PSI, 150PSI, PN6, PN10, PN16
Size: 11/2"(DN40)-24"(DN600)

Check Valves



Art No.: SOLID034

Design: DIN3202 F6 EN1074-3 EN558-1
Type: Swing type, Flange end with weight lever
Class: PN6, PN10, PN16
Size: DN40-DN600

Check Valves

Art No.: SOLID035

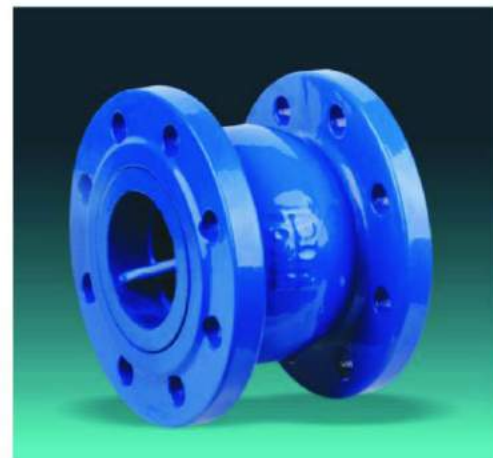
Design: DIN3202 F1, EN1074-3
Type: Lift type, Flange end
Class: PN6, PN10, PN16
Face to face: EN558-1 series 1
Size: DN15-DN300



Check Valves

Art No.: SOLID036

Design: EN1074-3
Type: Vertical type, Flange end
Class: PN6, PN10, PN16
Size: DN50-DN300



Butterfly Valves



Art No.: SOLID045

Design: BS5155 EN593 EN1074
Type: U section type Body, lever operated
Class: PN10, PN16
Size: DN50-DN2200

Butterfly Valves



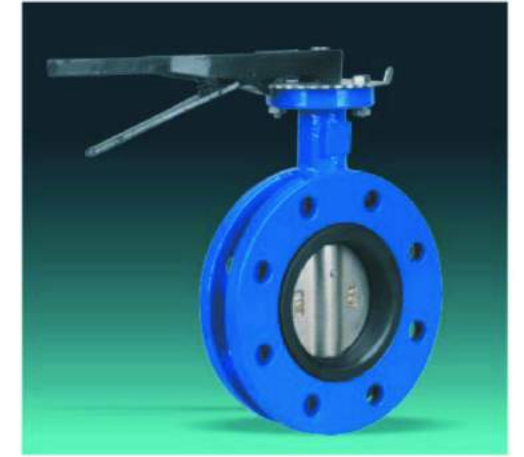
Art No.: SOLID046

Design: BS5155, EN593, ISO5752
Type: Double flange, gear box operated
Class: PN10, PN16
Face to face: EN558-1 series 13
Size: DN50-DN2200

Butterfly Valves

Art No.: SOLID047

Design: BS5155, EN593
Type: Double flange, lever operated
Class: PN10, PN16
Size: DN50-DN2200



Butterfly Valves

Art No.: SOLID048

Design: BS5155, EN593, ISO5752
Type: Double eccentric, flange end gear box operated
Class: PN10, PN16, PN25
Size: DN50-DN2400



Butterfly Valves



Art No.: SOLID041

Design: MSS SP-67, BS5155, EN593

Type: Wafer type, gear box operated

Class: 125PSI, 150PSI, PN10, PN16

Size: 1 1/2" (DN40)–48" (DN1200)

Butterfly Valves



Art No.: SOLID042

Design: MSS SP-67, BS5155, EN593

Type: Industrial, lever operated

Size: 1 1/2" (DN40)–12" (DN300)

Butterfly Valves

Art No.: SOLID043

Design: MSS SP-67, BS5155, EN593

Type: Lug type, lever operated

Size: 1 1/2" (DN40)–48" (DN1200)



Butterfly Valves

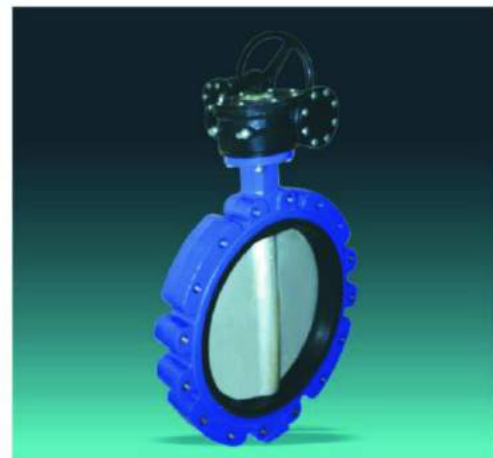
Art No.: SOLID044

Design: MSS-SP-67 BS5155 EN593 EN1074

Type: Lug type, gear operated

Class: PN10, PN16

Size: 1 1/2" (DN40)–48" (DN1200)



Cast iron & Ductile iron valves
Globe Valves

Globe Valves



Art No.: SOLID037

Design: MSS-SP-85
 Type: Straight type, Flange end
 Class: 125PSI, 150PSI
 Size: 1 1/2" - 12"

Globe Valves



Art No.: SOLID038

Design: BS5152
 Type: Straight type, Flange end
 Class: PN10, PN16
 Size: DN40 - DN300

Globe Valves

Art No.: SOLID039

Design: BS5152
 Type: Angle type, Flange end
 Class: PN10, PN16
 Size: 1 1/2" - 8"



Globe Valves

Art No.: SOLID040

Design: DIN3202 F1 DIN3356 EN13789
 Type: Straight type, Flange end
 Class: PN10, PN16
 Face to Face: EN558 - 1 series 1
 Size: DN15 - DN300



Cast iron & Ductile iron valves
Butterfly Valves